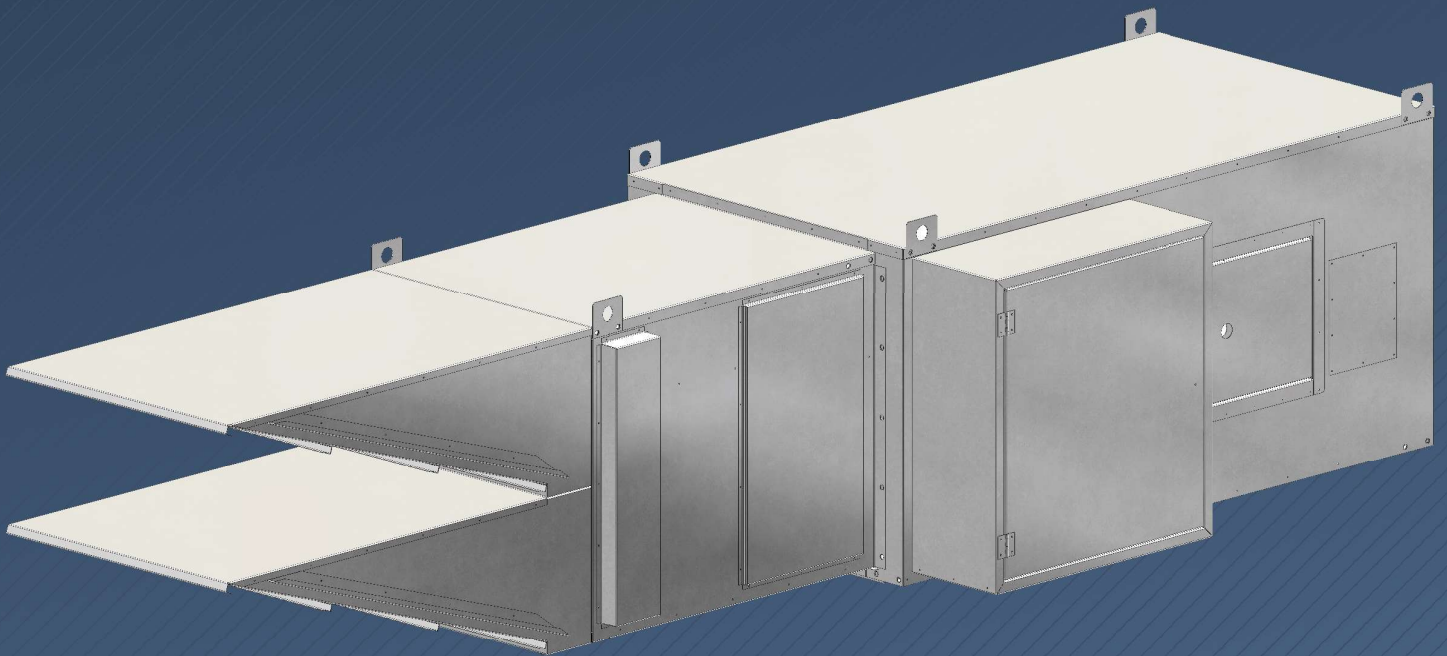


# *Weather-Rite* LLC

## *Direct-Fired Air Handler*



### *XT-Series Dimension and Selection Guide*

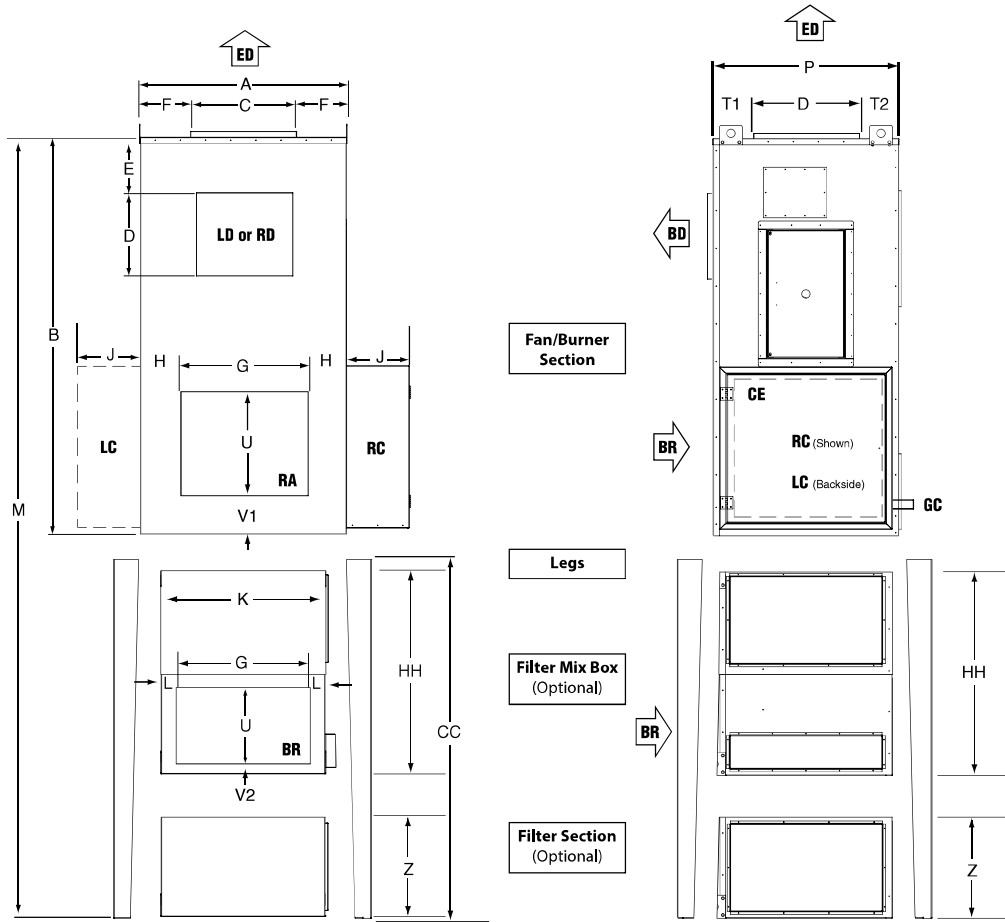
**1.800.589.3691**  
**[www.weather-rite.com](http://www.weather-rite.com)**



**Intertek**

ANSI Z83.4/CSA 3.7 100% OUTSIDE AIR  
(US & CANADA)  
Z83.18 - RECIRCULATION (US)  
ANSI Z83.25/CSA 3.19 PROCESS HEATER  
(US & CANADA)

# Upright Model



## DIMENSIONS

Model	A	B	C	D	E	F	G	H	J	K	L	M1*	M2*	P	T1	T2	U	V1	V2	W1*	W2*	Y	Z
XT-112 1K-2K CFM	(in) (cm) 28.3 (71.8)	81.7 (207.5)	11.8 (29.9)	10.2 (25.9)	9.2 (23.3)	8.3 (21.0)	16.0 (40.6)	6.1 (15.5)	15.1 (38.4)	25.3 (64.2)	4.7 (12.0)	134.8 (342.4)	168.7 (428.5)	32.2 (81.8)	20.8 (52.8)	3.1 (7.9)	18.0 (28.4)	7.3 (18.5)	7.3 (18.5)	33.2 (84.3)	40.7 (103.4)	43.5 (110.5)	28 (71.1)
XT-112 3K-5K CFM	(in) (cm) 28.3 (71.8)	81.7 (207.5)	15.6 (39.6)	13.5 (84.2)	9.2 (23.3)	6.1 (15.5)	16.0 (40.6)	6.1 (15.5)	15.1 (38.4)	25.3 (64.2)	4.7 (12.0)	134.8 (342.4)	168.7 (428.5)	32.2 (81.8)	15.7 (39.8)	3.0 (7.6)	18.0 (28.4)	7.3 (18.5)	7.3 (18.5)	33.2 (84.3)	40.7 (103.4)	43.5 (110.5)	28 (71.1)
XT-115	(in) (cm) 43.3 (109.9)	106.6 (270.7)	23.1 (58.7)	25.0 (63.5)	11.2 (28.4)	10 (25.4)	32 (81.3)	5.6 (14.2)	15.0 (38.1)	39.0 (99.0)	4.15 (10.5)	159.6 (405.4)	193.6 (491.7)	40.2 (102.1)	11.9 (30.2)	3.4 (8.6)	23.3 (59.2)	8.1 (20.6)	3.4 (8.6)	41.3 (104.9)	65.4 (166.1)	45.8 (116.3)	26.0 (66.0)
XT-118	(in) (cm) 49.1 (124.7)	97.8 (248.4)	27.6 (70.1)	27.8 (70.6)	12.8 (32.5)	10.8 (27.4)	40.5 (102.8)	4.3 (10.9)	15.0 (38.1)	43.1 (109.4)	2.8 (7.1)	150.8 (383.0)	184.8 (469.4)	44.3 (112.5)	13.7 (34.7)	3.2 (8.1)	20.0 (51.0)	8.2 (20.8)	3.4 (8.6)	45.7 (116.1)	65.0 (165.1)	43.25 (109.9)	25.0 (63.5)
XT-125	(in) (cm) 55.9 (141.9)	116.2 (295.1)	31.6 (80.2)	31.3 (79.5)	13.6 (34.5)	12.1 (30.7)	44.3 (112.5)	5.8 (14.7)	19.8 (50.3)	49.9 (126.7)	4.25 (10.7)	188.2 (478.0)	234.2 (594.8)	56.2 (142.7)	8.4 (21.3)	2.9 (7.3)	35.2 (89.4)	6.6 (16.8)	3.4 (8.6)	57.4 (145.8)	79.0 (200.7)	55.0 (139.7)	31.0 (78.7)
XT-130	(in) (cm) 80.1 (203.4)	153.3 (389.3)	36.7 (93.2)	36.7 (93.2)	17.1 (43.4)	21.5 (54.6)	69.1 (175.5)	5.5 (14.0)	20.2 (51.3)	73.1 (185.6)	4.25 (10.7)	225.3 (572.3)	271.3 (689.1)	58.2 (147.8)	17.5 (44.4)	4.0 (10.1)	35.2 (89.4)	8.9 (22.6)	4.0 (10.2)	58.5 (148.6)	78.9 (200.4)	65.9 (167.4)	25.0 (63.5)

## IMPORTANT NOTES:

\*(see corresponding dimensions below)

**M1** - No Filter Mixbox

**M2** - with Filter Mixbox

**W1** - with Moisture Limiter or No Filters

**W2** - with Filters

**CC1** - No Filter Mixbox

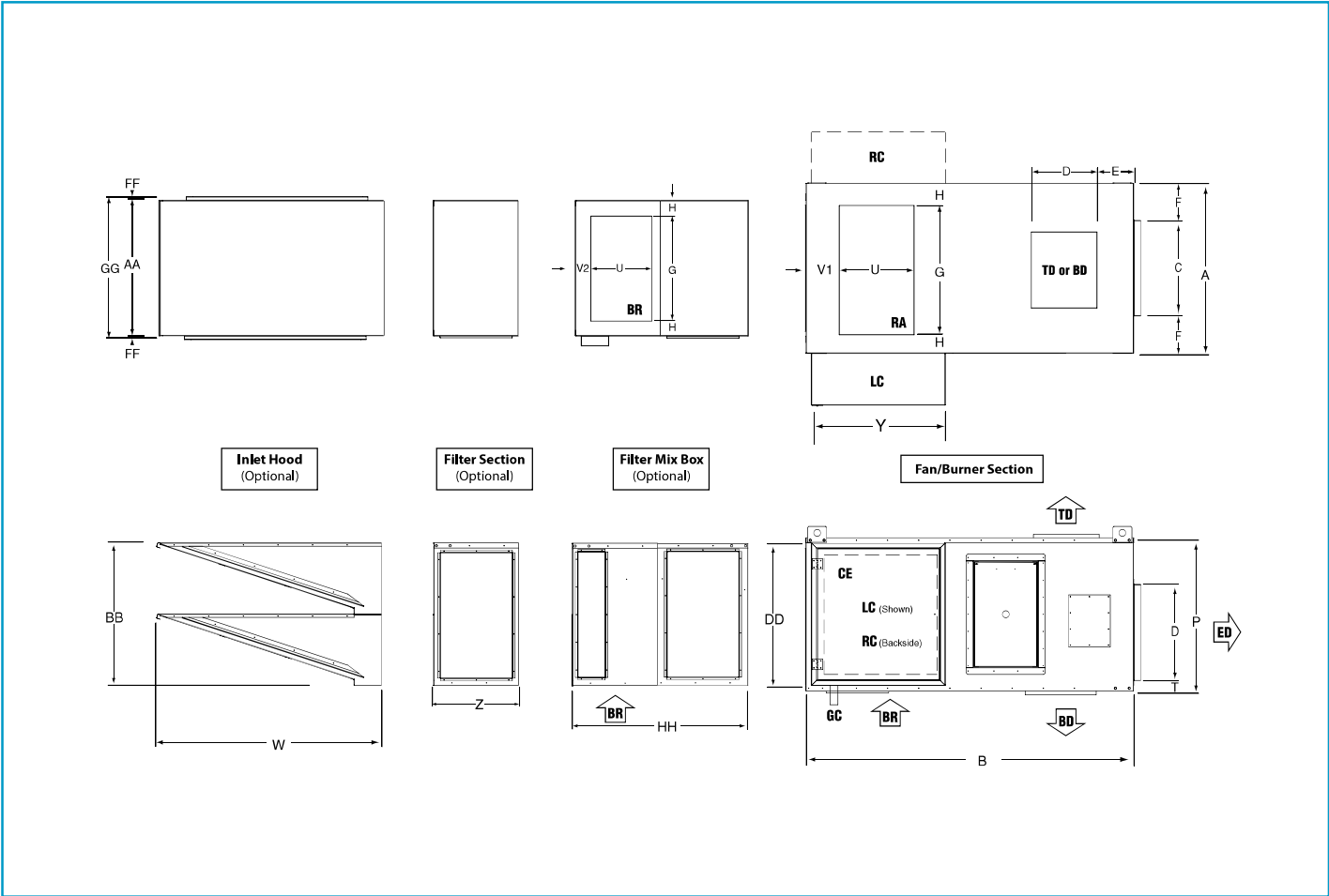
**CC2** - with Filter Mixbox

## DIMENSIONS

Model	AA	BB	CC1*	CC2*	DD	FF	GG	HH	Horizontal Leg Height
XT-112	(in) (cm) 25.3 (64.3)	29.2 (74.1)	53.0 (134.6)	87.0 (220.9)	29.0 (73.6)	1.1 (2.7)	27.8 (70.6)	48.0 (121.9)	46.0 (116.8)
XT-115	(in) (cm) 39.1 (99.3)	37.2 (94.5)	53.0 (134.6)	87.0 (220.9)	40.1 (101.9)	1.1 (2.7)	41.6 (105.7)	50.4 (128.1)	46.0 (116.8)
XT-118	(in) (cm) 43.5 (110.5)	44.2 (112.3)	53.0 (134.4)	87.0 (220.9)	41.3 (104.9)	1.1 (2.7)	45.8 (116.3)	46.9 (119.1)	46.0 (116.8)
XT-125	(in) (cm) 55.8 (141.7)	56.2 (142.7)	72.0 (182.9)	118.0 (299.7)	56.2 (142.8)	1.1 (2.7)	52.4 (133.1)	67.6 (171.7)	46.0 (116.8)
XT-130	(in) (cm) 72.5 (184.2)	58.2 (147.8)	72.0 (182.9)	118.0 (299.7)	43.0 (109.2)	1.1 (2.7)	74.8 (190.0)	63.6 (161.5)	46.0 (116.8)



# Horizontal Model



## ESTIMATED SHIPPING WEIGHTS

Model	XT-112		XT-115		XT-118		XT-125		XT-130	
	lbs	kg	lbs	kg	lbs	kg	lbs	kg	lbs	kg
Air Handler*	589	267	994	451	1290	585	1946	883	2877	1305
Filter Section**	118	54	210	95	282	128	407	185	439	199
Filtered Mix Box**	301	137	443	201	539	245	800	363	1156	524
Inlet Hoods	145	66	276	125	346	157	499	226	539	244
Upright Legs***	75	34	99	45	137	62	176	80	214	97
Horizontal Legs***	102	46	102	46	102	46	102	46	102	46
Moisture Limiters****	N/A	N/A	120	54	120	54	210	95	260	118
Skid	147	67	249	113	324	146	486	220	719	326

## LEGEND

<b>BD</b> = Bottom Discharge	<b>OA</b> = Outside Air
<b>CE</b> = Control Enclosure	<b>RA</b> = Return Air (Optional)
<b>GC</b> = Gas Connection	<b>TD</b> = Top Discharge
<b>ED</b> = End Discharge	<b>RC</b> = Right Hand Controls
	<b>LC</b> = Left Hand Controls

## IMPORTANT NOTES:

- Shipping weights apply to both horizontal and upright models.
- All dimensions and weights are subject to change without notice.
- Control enclosure may be located on either side of air handler. Consult factory submittals for additional details.
- Return Air (RA) is only for Fixed Recirculation (FR) and Air Management (AM) styles.

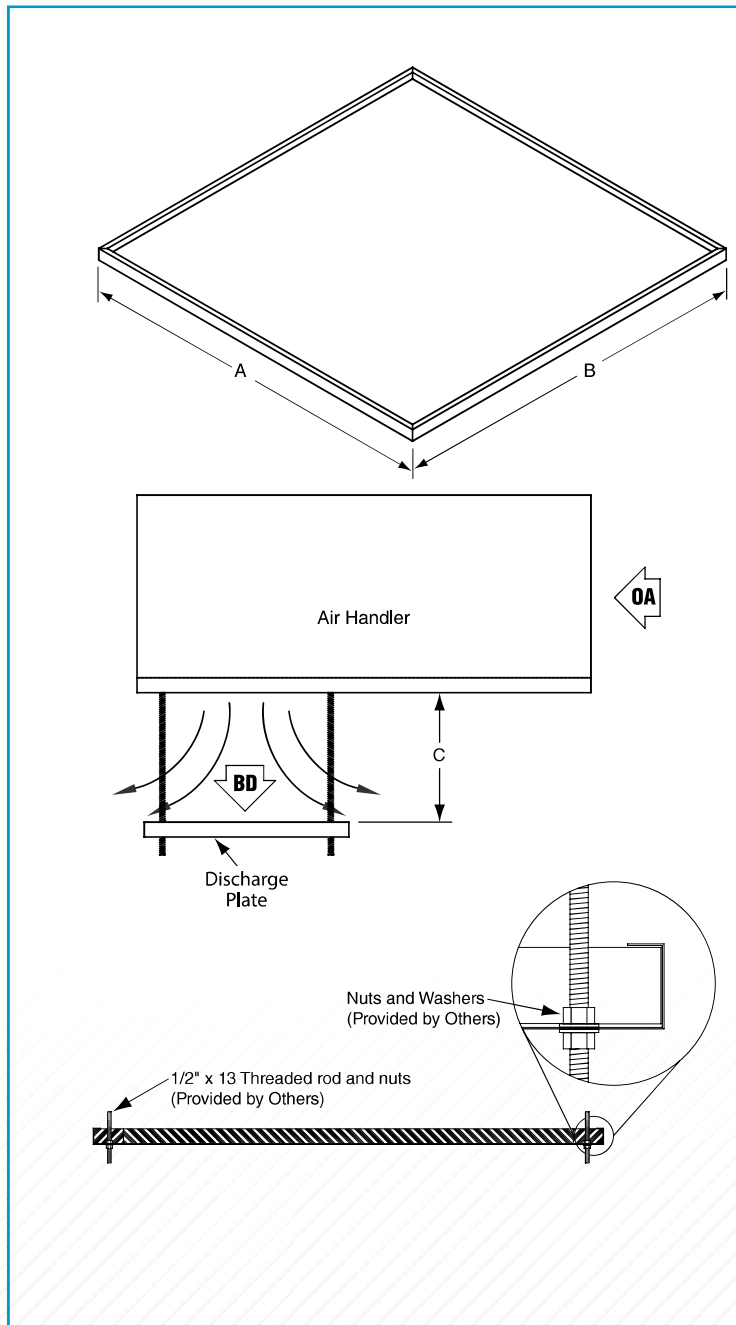
\*Includes Casing, Motor, Control Panel and Manifold

\*\*Includes weight of Filters

\*\*\*Total Quantity of 4 legs

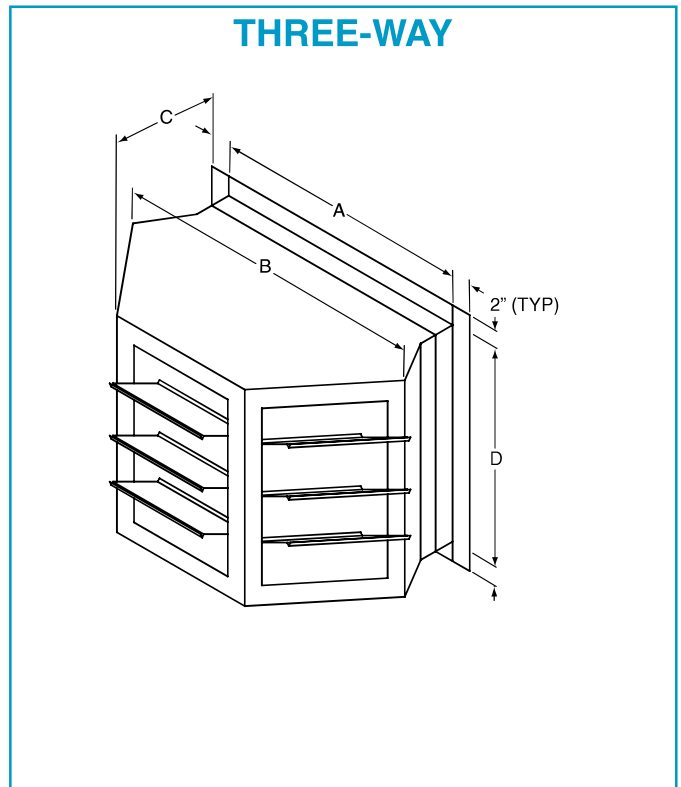
\*\*\*\*Mounted to Intake Hood

# Splash Plates



DIMENSIONS					
Model		A	B	C (min)	C (max)
XT-112	(in)	25.5	27.6	15.0	20.0
1K-2K CFM	(cm)	(64.8)	(70.1)	(38.1)	(50.8)
XT-112	(in)	25.5	27.6	15.0	20.0
3K-5K CFM	(cm)	(64.8)	(70.1)	(38.1)	(50.8)
XT-115	(in)	37.0	35.1	18.0	27.0
	(cm)	(94.0)	(89.2)	(47.5)	(68.6)
XT-118	(in)	39.8	39.6	18.0	27.0
	(cm)	(101.1)	(100.6)	(47.5)	(68.6)
XT-125	(in)	43.3	43.6	25.0	38.0
	(cm)	(110.0)	(110.7)	(63.5)	(96.5)
XT-130	(in)	48.7	48.7	30.0	45.0
	(cm)	(123.7)	(123.7)	(76.2)	(114.3)

# Discharge Heads

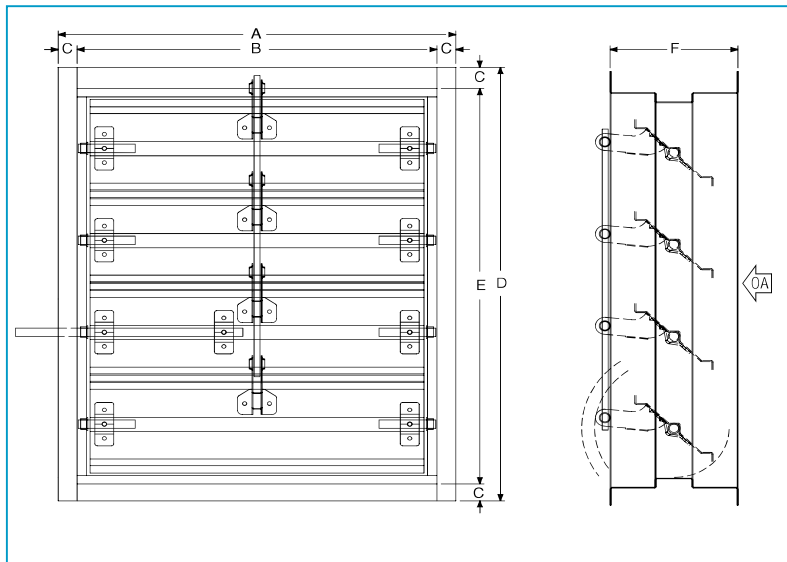


DIMENSIONS							WEIGHT	
Model		A	B	C	D	E	lbs	kg
XT-112	(in)	16.0	35.5	22.8	13.6	2.0	40	18
	(cm)	(40.6)	(90.2)	(57.9)	(34.5)	(5.1)		
XT-115	(in)	23.4	55.7	35.2	25.3	2.0	50	23
	(cm)	(59.4)	(141.5)	(89.4)	(64.3)	(5.1)		
XT-118	(in)	27.8	55.7	35.8	27.8	2.0	84	38
	(cm)	(70.6)	(141.5)	(90.9)	(70.6)	(5.1)		
XT-125	(in)	34.5	77.3	47.7	32.4	2.0	120	54
	(cm)	(87.6)	(196.3)	(121.2)	(82.3)	(5.1)		
XT-130	(in)	37.4	86.8	51.8	37.4	2.0	160	73
	(cm)	(95.0)	(220.5)	(131.6)	(95.0)	(5.1)		

## IMPORTANT NOTES:

- Discharge head must be field supported by others.
- Discharge head has manually adjustable horizontal blades.

# Discharge Dampers



DIMENSIONS							WEIGHT		
Model		A	B	C	D	E	F	lbs	kg
XT-112	(in) (cm)	18.6 (47.2)	15.6 (39.6)	1.5 (3.8)	16.5 (41.9)	13.5 (34.2)	8.0 (20.3)	25	11
XT-115	(in) (cm)	28.0 (71.1)	25.0 (63.5)	1.5 (3.8)	26.1 (66.2)	23.1 (58.6)	8.0 (20.3)	51	23
XT-118	(in) (cm)	30.8 (78.2)	27.8 (70.6)	1.5 (3.8)	30.6 (77.7)	27.6 (70.1)	8.0 (20.3)	65	29
XT-125	(in) (cm)	34.3 (87.1)	31.3 (79.5)	1.5 (3.8)	34.6 (87.8)	31.6 (80.2)	8.0 (20.3)	83	38
XT-130	(in) (cm)	39.8 (101.0)	36.8 (93.4)	1.5 (3.8)	39.8 (101.0)	36.8 (93.4)	8.0 (20.3)	111	50

## IMPORTANT NOTES:

- Discharge dampers do not mount directly to air handler; they mount downstream of air handler in duct work.

# Filters

## For OA Filter Sections

Permanent Aluminum Mesh Pleated / Polyester			
Model		Size	Quantity
XT-112	(in) (cm)	25 x 25 (63.5 x 63.5 x 5.1)	1
XT-115	(in) (cm)	20 x 20 (50.8 x 50.8 x 5.1)	6
XT-118	(in) (cm)	24 x 20 + 20 x 20 [5 each] (60.9 x 50.8 + 50.8 x 50.8)	10
XT-125	(in) (cm)	25 x 25 (63.5 x 63.5 x 5.1)	12
XT-130	(in) (cm)	24 x 20 (60.9 x 50.8 x 5.1)	24

## For Inlet Hoods

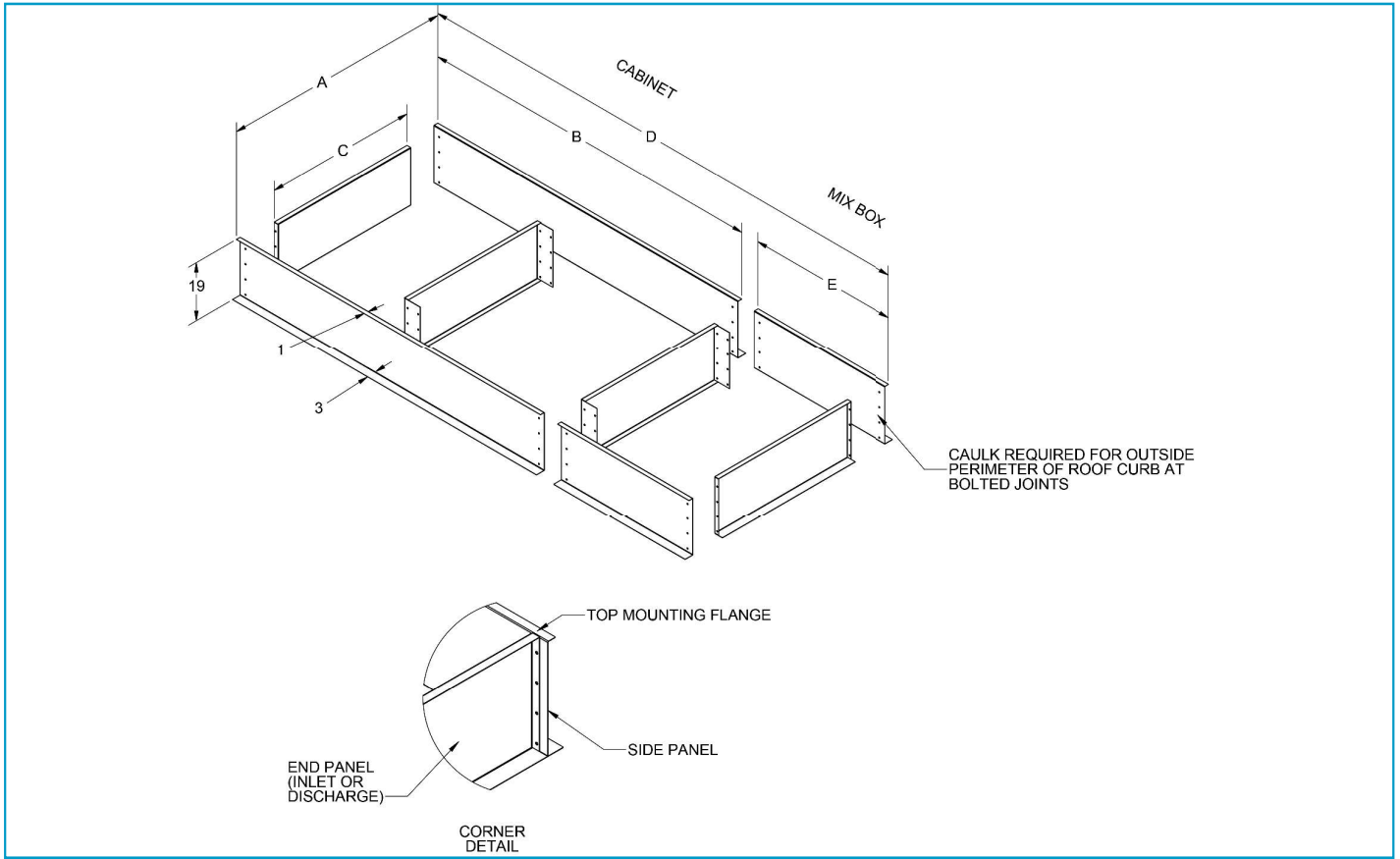
Poly Panel			
Model		Size	Quantity
XT-112	(in) (cm)	25 x 25 (63.5 x 63.5 x 2.5)	1
XT-115	(in) (cm)	4 x 20 (50.8 x 50.8 x 2.5)	6
XT-118	(in) (cm)	24 x 20 + 20 x 20 [5 each] (60.9 x 50.8 x 2.5 + 50.8 x 50.8 x 2.5)	10
XT-125	(in) (cm)	50 x 25 (Poly) OR 25 x 25 (Aluminum) (127 x 63.5 OR 63.5 x 63.5)	18
XT-130	(in) (cm)	25 x 25 (63.5 x 190.5 x 2.5)	18

## For Filter Mixing Box Sections

Permanent Aluminum Mesh Pleated / Polyester			
Model		Size	Quantity
XT-112	(in) (cm)	25x25 (63.5 x63.5)	2
XT-115	(in) (cm)	20x20 (50.8 x 50.8)	6
XT-118	(in) (cm)	24x20 + 20x20 [5 each] (50.8 x 50.8 + 60.9 x 50.8)	10
XT-125	(in) (cm)	25x25 (63.5 x 63.5)	12
XT-130	(in) (cm)	25x72 (63.5 x 190.5)	6



# Roof Curbs



		DIMENSIONS					WEIGHT*		WEIGHT**	
Model		A	B	C	D	E	lbs	kg	lbs	kg
2005	(in) (cm)	25.9 (65.8)	78.2 (198.6)	22.9 (58.2)	131.7 (334.5)	53.5 (135.9)	96	43	140	63
2010	(in) (cm)	39.3 (99.8)	102.5 (260.3)	36.3 (96.8)	155.5 (395.1)	51.4 (128.1)	133	60	179	81
2010B	(in) (cm)	47 (119.4)	93 (236.2)	42.1 (111.6)	143.2 (363.8)	47.9 (119.2)	130	59	173	78
2020	(in) (cm)	53.5 (135.9)	113.6 (288.5)	48.9 (128.8)	183 (464.8)	69 (175.3)	153	69	216	97
2030	(in) (cm)	76.6 (194.6)	151.8 (385.6)	73.1 (190.3)	215.4 (547.1)	64.6 (161.5)	210	95	268	121

## IMPORTANT NOTES:

\*Blower and Burner Section

\*\*Blower, Burner and Filter Mixbox

- Curb is shipped unassembled.
- A & B are outside dimensions for the top of the curb.
- Curb material is 14 gauge galvanized steel.
- Nuts and bolts (3/8" x 1") are furnished.
- Caulk all joints before assembling. (Caulk provided by others).
- Dimensions D & E only applicable when Filtered Mixbox option is utilized.

# XT-Series Selection Guide

"Airflow CFM (m3/h)"	Model	Motor HP at 1" ESP	dBA at Noted External Static Pressure (in wc)**			Heat Output at Maximum Temperature Rise (Btu/h) X 1000		Minimum Inlet Gas Pressure in wc	Minimum Inlet Gas Pressure in wc (mbar)***
			0	0.5	1	NG	LPG		
1,000 (1,700)	XT-112	1	48	72	72	119	97	9.6	23.9
2,000 (3,400)	XT-112	3	78	80	81	238	194	6.7	16.7
3,000 (5,100)	XT-112	2	61	68	72	356	292	5.7	14.2
4,000 (6,800)	XT-112	3	66	69	73	475	389	8.3	20.7
5,000 (8,500)	XT-112	5	72	72	75	594	486	8.5	21.2
5,000 (8,500)	XT-115	3	64	75	80	594	486	6.3	15.7
6,000 (10,200)	XT-115	5	62	73	80	713	583	5.8	14.4
7,000 (11,900)	XT-115	5	60	71	78	832	680	6.5	16.2
8,000 (13,600)	XT-115	5	61	72	78	950	778	7.7	19.2
9,000 (15,300)	XT-115	7.5	65	73	79	1,069	875	9.2	22.9
10,000 (17,000)	XT-115	10	66	74	79	1,188	972	10.9	27.1
11,000 (18,700)	XT-118	7.5	67	69	73	1,307	1,069	6.0	14.9
12,000 (20,400)	XT-118	7.5	69	71	71	1,426	1,166	6.9	17.2
13,000 (22,100)	XT-118	10	71	73	74	1,544	1,264	7.9	19.7
14,000 (23,800)	XT-118	10	72	75	76	1,663	1,361	8.9	22.1
16,000 (27,200)	XT-118	15	76	78	79	1,901	1,555	11.1	27.6
18,000 (30,600)	XT-118	20	79	80	81	2,138	1,750	13.7	34.1
16,000 (27,200)	XT-125	10	65	72	73	1,901	1,555	6.1	15.2
18,000 (30,600)	XT-125	15	67	72	77	2,138	1,750	6.0	14.9
20,000 (34,000)	XT-125	15	70	73	77	2,376	1,944	6.8	16.9
22,500 (38,200)	XT-125	20	73	74	78	2,673	2,187	8.0	19.9
25,000 (42,500)	XT-125	25	76	76	79	2,970	2,430	9.4	23.4
27,500 (46,700)	XT-125	30	78	79	80	3,267	2,673	11.1	27.6
30,000 (51,000)	XT-125	40	80	81	84	3,564	2,916	13.0	32.3
27,500 (46,700)	XT-130	25	82	83	85	3,267	2,673	9.0	22.4
30,000 ((51,000)	XT-130	25	84	85	86	3,564	2,916	10.5	26.1
32,500 (55,200)	XT-130	30	86	87	88	3,861	3,159	12.2	30.4
35,000 (59,500)	XT-130	40	88	88	89	4,158	3,402	14.1	35.1
37,500 (63,700)	XT-130	40	90	90	90	4,455	3,645	13.4	33.3
40,000 (68,000)	XT-130	50	91	91	92	4,752	3,888	13.8	34.3

## IMPORTANT NOTES:

All information provided in this table is based on the assumption that unit is installed at an altitude below 2000 feet (609.6 meters).

CF = Consult Factory

\*\* dBA is measured at 10' (3 m) from unducted discharge.

\*\*\* Maximum Inlet Gas Pressure: All Models = 5 psi (344.7 mbar)



# Thank You for Your Business!

## **Weather-Rite LLC**

1100 Seven Mile Road NW  
Comstock Park, MI 49321  
Telephone: +1.612.338.1401  
Fax: +1.616.784.0435  
Toll Free: 1.800.589.3691  
[www.weather-rite.com](http://www.weather-rite.com)

**This product is not for residential use.  
This document is intended to assist licensed professionals in the exercise of their professional judgment.**

© 2019 Weather-Rite LLC

All rights reserved. No part of this work covered by the copyrights herein may be reproduced or copied in any form or by any means – graphic, electronic, or mechanical, including photocopying, recording, taping, or information storage and retrieval systems – without written permission of Weather-Rite LLC. All information contained in this document is subject to change without notice.