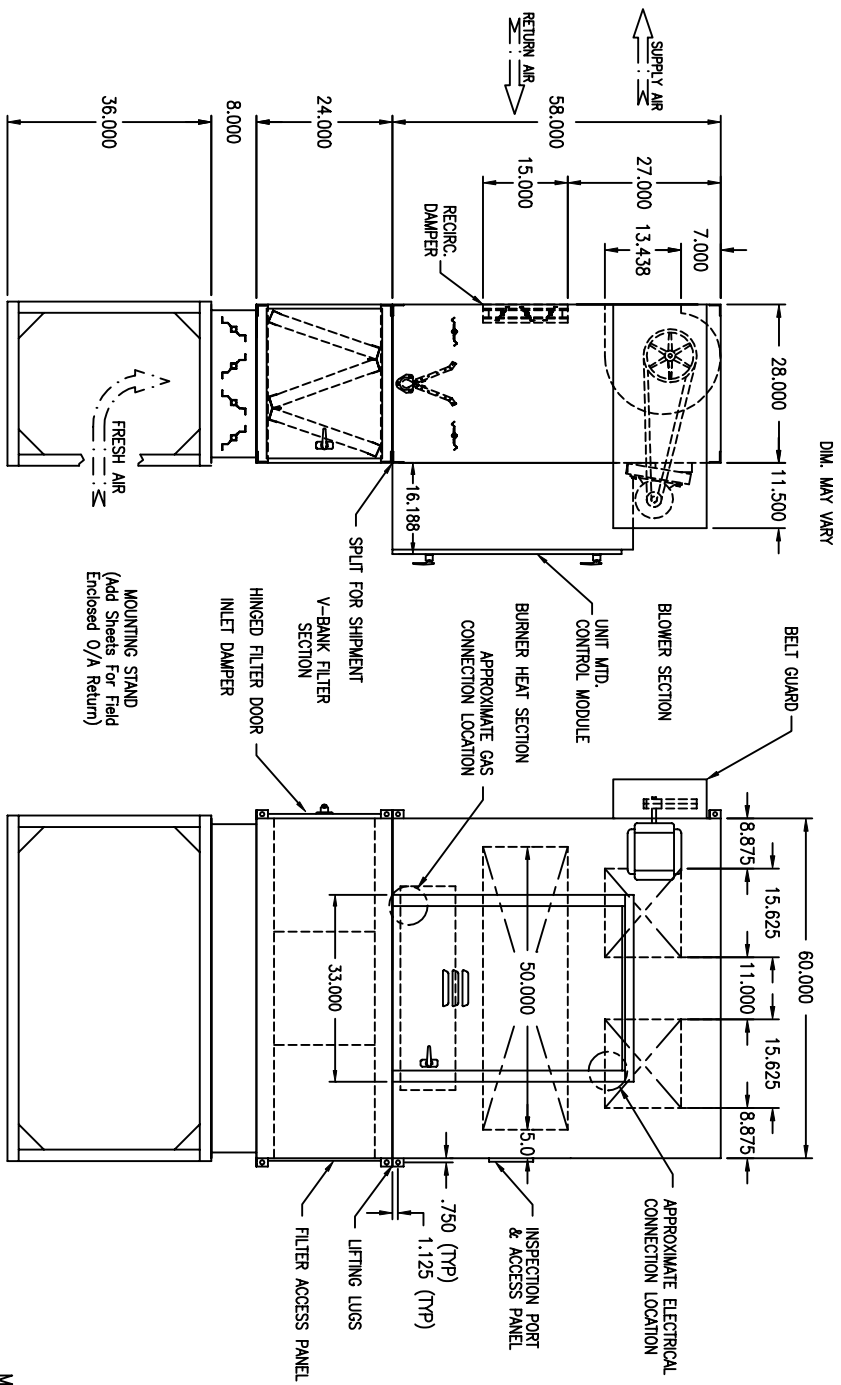


**MODEL**  
 AirRite TT Series 212 VTL Outdoor

**STANDARD FEATURES**

- TESTED TO ANSI Z83.4 & Z83.18
- MAXITROL TEMPERATURE CONTROL SYSTEM
- ELECTRONIC FLAME SUPERVISION
- FACTORY TESTED
- 16 GAUGE CRS CASING
- (2) 12" DWDI FORWARD CURVED BLOWER
- UNIT MTD CONTROL MODULE
- LUBRICATED BEARINGS W/ ZIRK FITTINGS
- BELT GUARD (PER OSHA STANDARDS)
- AIR PROVING SWITCH
- AIR INLET SCREEN (OUTDOOR UNITS ONLY)
- INDUSTRIAL ENAMEL EXTERIOR FINISH
- HEAT & RUST RESISTANT INTERIOR FINISH
- ADJUSTABLE BURNER PROFILE DAMPERS
- MIDCO BURNER

MOUNTING STAND REQUIRED WHEN INLET  
 DAMPER SELECTED



PRELIMINARY

**WEATHER-RITE**  
 HEATING AND VENTILATION, INC.

- NOTE:**
- 1.) DRAWING IS NOT TO SCALE.
  - 2.) THIS SUBMITTAL ONLY APPLICABLE TO DIRECT FIRED BURNER.
  - 3.) DUE TO SHIPPING REQUIREMENTS, SOME ELECTRICAL RECONNECTION MAY BE REQUIRED.