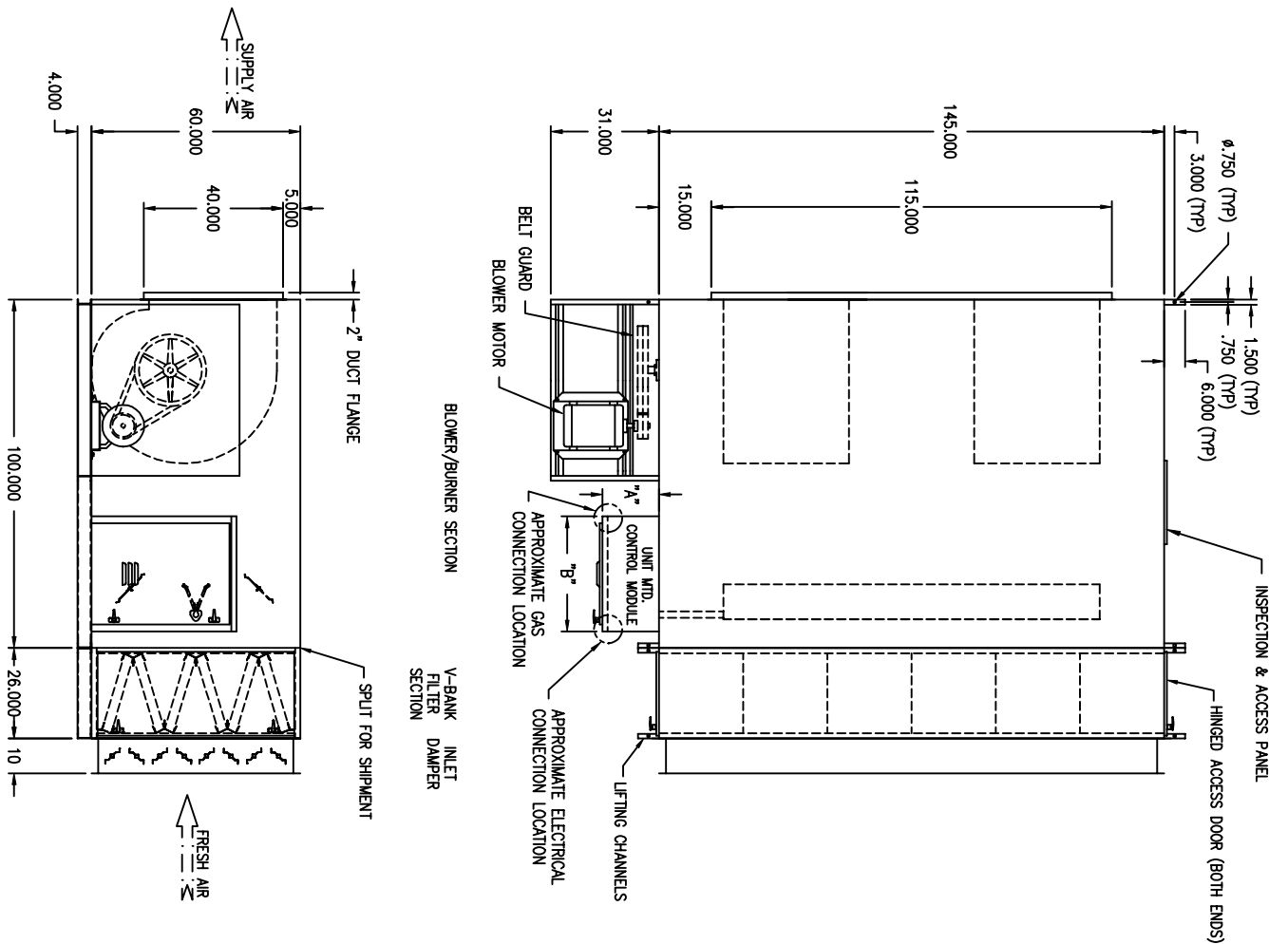


- NOTE:  
 1.) DRAWING IS NOT TO SCALE.  
 2.) THIS SUBMITTAL ONLY APPLICABLE TO DIRECT FIRED BURNER.  
 3.) DUE TO SHIPPING REQUIREMENTS, SOME ELECTRICAL RECONNECTION MAY BE REQUIRED.



"A"	"B"	GAS TRAIN SIZE
16,188	33,000	1", 1-1/4", 1-1/2"
16,188	33,000	2"

PRELIMINARY

**MODEL**  
 AirRite TT Series 230 HHL Indoor

**STANDARD FEATURES**

- TESTED TO ANSI Z83.4 & Z83.18
- MAXITROL TEMPERATURE CONTROL SYSTEM
- ELECTRONIC FLAME SUPERVISION
- FACTORY TESTED
- 16 GAUGE CRS CASING
- (2) 30" DWD/ FORWARD CURVED BLOWER
- UNIT MTD CONTROL MODULE
- LUBRICATED BEARINGS W/ ZIRK FITTINGS
- BELT GUARD (PER OSHA STANDARDS)
- AIR PROVING SWITCH
- AIR INLET SCREEN (OUTDOOR UNITS ONLY)
- INDUSTRIAL ENAMEL EXTERIOR FINISH
- HEAT & RUST RESISTANT INTERIOR FINISH
- ADJUSTABLE BURNER PROFILE DAMPERS
- MIDCO BURNER

**WEATHER-RITE**  
 HEATING AND VENTILATION, INC.