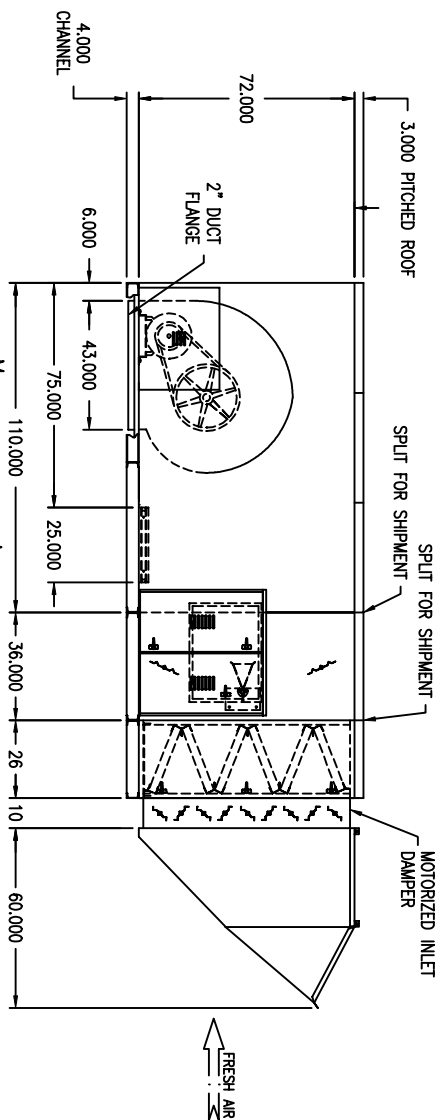
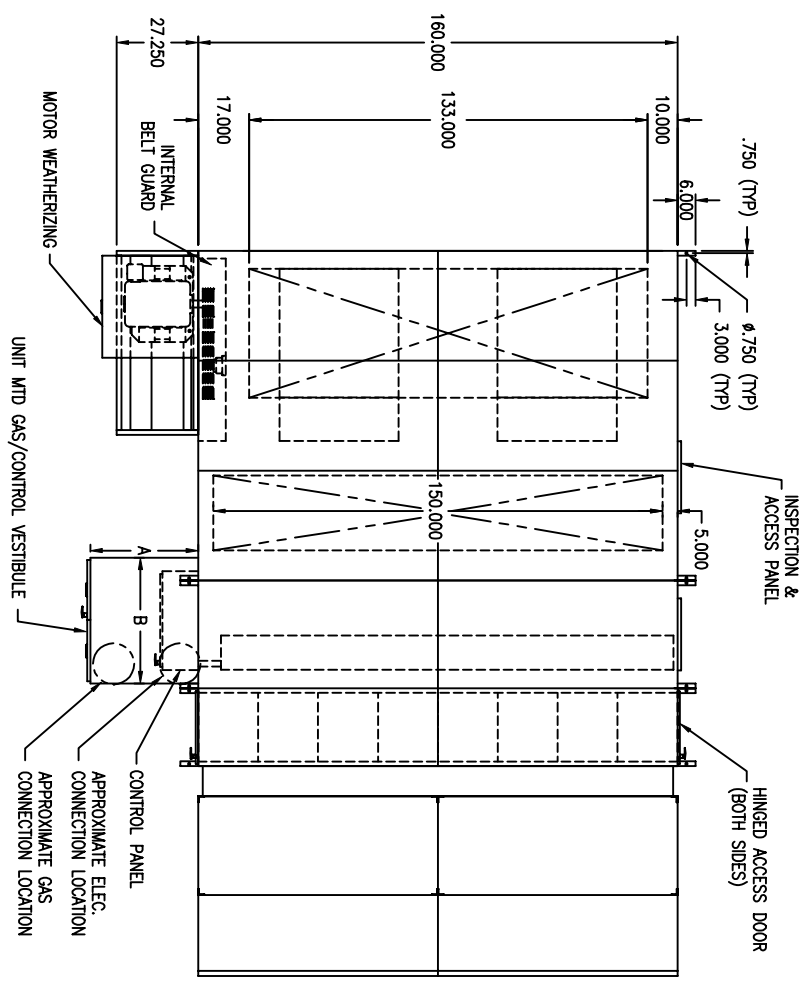


- NOTE:
 1.) DRAWING IS NOT TO SCALE.
 2.) THIS SUBMITTAL ONLY APPLICABLE TO DIRECT FIRED BURNER.
 3.) DUE TO SHIPPING REQUIREMENTS, SOME ELECTRICAL RECONNECTION MAY BE REQUIRED.



BLOWER/RECIRC. SECTION
 BURNER SECTION
 FILTER SECTION
 FRESH AIR HOOD (SHIPPED BROKEN DOWN) (SHIP LOOSE)



INSPECTION & ACCESS PANEL
 HINGED ACCESS DOOR (BOTH SIDES)
 CONTROL PANEL
 APPROXIMATE ELEC. CONNECTION LOCATION
 APPROXIMATE GAS CONNECTION LOCATION
 UNIT AND GAS/CONTROL VESTIBULE
 MOTOR WEATHERIZING
 INTERNAL BELT GUARD

MODEL
 AirRite TT Series 233 HBL Outdoor

STANDARD FEATURES

- TESTED TO ANSI Z83.4 & Z83.18
- MAXITROL TEMPERATURE CONTROL SYSTEM
- ELECTRONIC FLAME SUPERVISION
- FACTORY TESTED
- 16 GAUGE CRS CASING
- (2) 33" DWI FORWARD CURVED BLOWER
- UNIT MTD CONTROL MODULE
- LUBRICATED BEARINGS W/ ZIRK FITTINGS
- BELT GUARD (PER OSHA STANDARDS)
- AIR PROVING SWITCH
- AIR INLET SCREEN (OUTDOOR UNITS ONLY)
- INDUSTRIAL ENAMEL EXTERIOR FINISH
- HEAT & RUST RESISTANT INTERIOR FINISH
- ADJUSTABLE BURNER PROFILE DAMPERS
- MIDCO BURNER

IF CURB IS REQUIRED:
 2" x 2" CURB ANGLE WILL BE ADDED TO 4" BASE CHANNEL OF UNIT

"A"	"B"	GAS TRAIN SIZE
16,188	33,000	1", 1-1/4", 1-1/2"
16,188	33,000	2"
36,310	42,000	2-1/2", 3"

PRELIMINARY

WEATHER-RITE
 HEATING AND VENTILATION, INC.