

**Customer:**

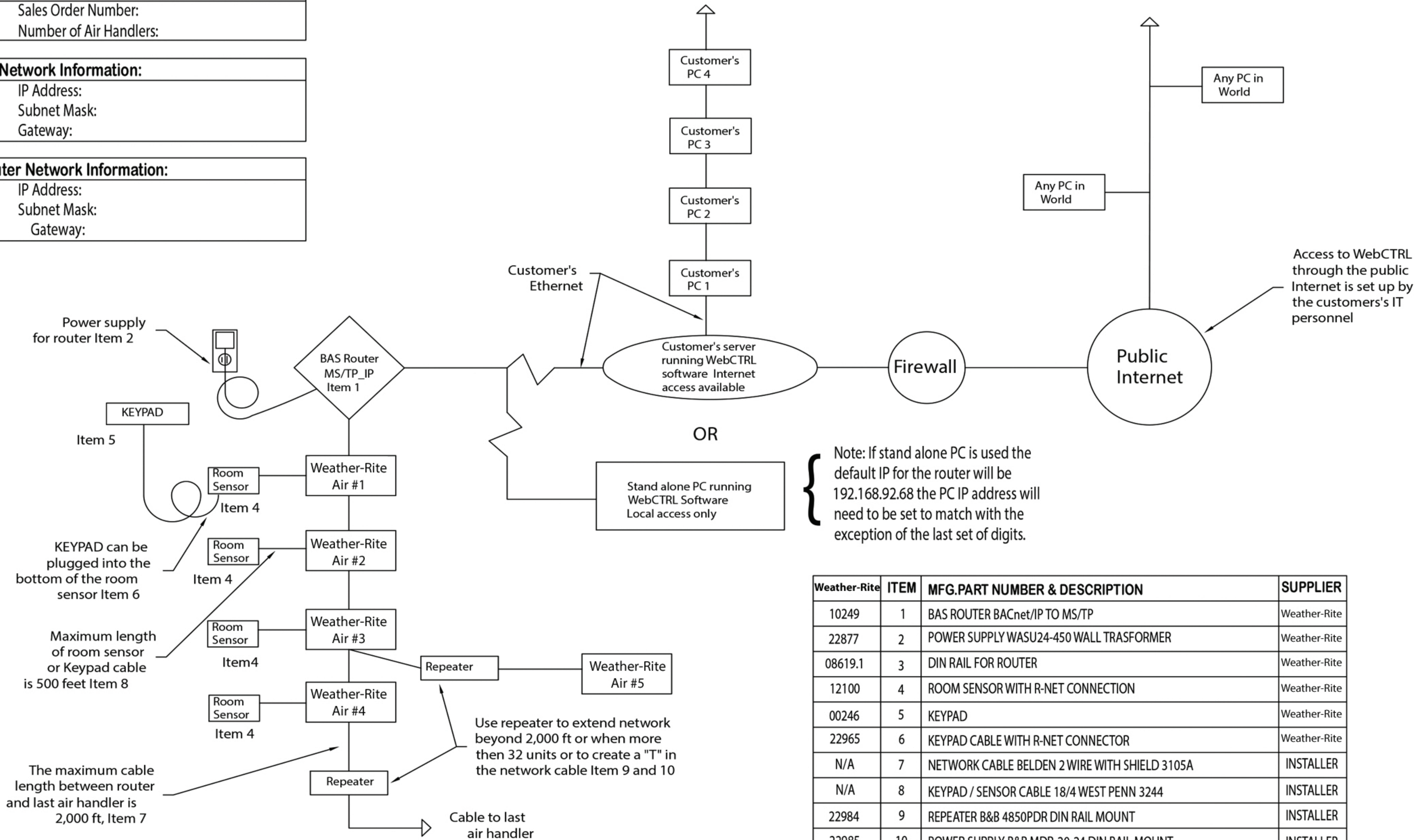
- Sales Order Number:
- Number of Air Handlers:

**PC Network Information:**

- IP Address:
- Subnet Mask:
- Gateway:

**Router Network Information:**

- IP Address:
- Subnet Mask:
- Gateway:



Weather-Rite	ITEM	MFG.PART NUMBER & DESCRIPTION	SUPPLIER
10249	1	BAS ROUTER BACnet/IP TO MS/TP	Weather-Rite
22877	2	POWER SUPPLY WASU24-450 WALL TRASFORMER	Weather-Rite
08619.1	3	DIN RAIL FOR ROUTER	Weather-Rite
12100	4	ROOM SENSOR WITH R-NET CONNECTION	Weather-Rite
00246	5	KEYPAD	Weather-Rite
22965	6	KEYPAD CABLE WITH R-NET CONNECTOR	Weather-Rite
N/A	7	NETWORK CABLE BELDEN 2 WIRE WITH SHIELD 3105A	INSTALLER
N/A	8	KEYPAD / SENSOR CABLE 18/4 WEST PENN 3244	INSTALLER
22984	9	REPEATER B&B 4850PDR DIN RAIL MOUNT	INSTALLER
22985	10	POWER SUPPLY B&B MDR-20-24 DIN RAIL MOUNT	INSTALLER

**FIGURE 33: Sensor / Network Cable for Intelligent Controls**

*Weather-Rite LLC*

1100 7 Mile Road, Comstock Park MI 49321-0700

**ALL DIMENSIONS ARE IN INCHES UNLESS OTHERWISE SPECIFIED**

DRAWING DESCRIPTION		SCALE	TOLERANCES (UNLESS OTHERWISE NOTED)	
MATERIAL: NA		WEIGHT (lbs):	FRACTION	MACH WELD FAB
DO NOT SCALE DRAWING		CHECKED BY:	1/32	1/8 1/16
REMOVE BURRS & SHARP EDGES		BLANK SIZE (in):	DECIMAL	.01 .03 .02
This sheet is for general information purposes only. Information can change without notice and should therefore not be used for construction or installation. All products must be set-up, assembled, installed and used in accordance with all applicable instructions, the provided instruction manual as well as requirements of governmental authorities. The information on this sheet is proprietary.		DRAWN BY:	ANGLE	1° 2° 2°
REV		PRINTED DATE:	CREATION DATE:	
DWG. NO.		SHEET		
		1 OF 1		